



SYSPRO 7 – *Success in Motion*



Simplifying your Success

//

We have an enviable track record in the ERP market for globally providing manufacturing and distributing organizations with the flexibility and customizability they need to differentiate themselves. The release of SYSPRO 7 is the next evolution of our commitment to helping our clients make their business more agile, cost effectively.

- Phil Duff, CEO, SYSPRO

//

Revitalize your business with SYSPRO 7

In keeping with a development strategy of customer-driven improvement, SYSPRO 7 is the latest version of SYSPRO, providing customers with greater business value through extended scalability, mobility, simpler business interactions and performance, and streamlined business processes.

SYSPRO 7, based upon the latest Microsoft® Windows® technology, brings Windows 8 style active tiles and touch screen capabilities to its existing user interface. This enables manufacturers and distributors to easily create tailor-fit environments for their own system, but without the maintenance and upgrade disadvantages.

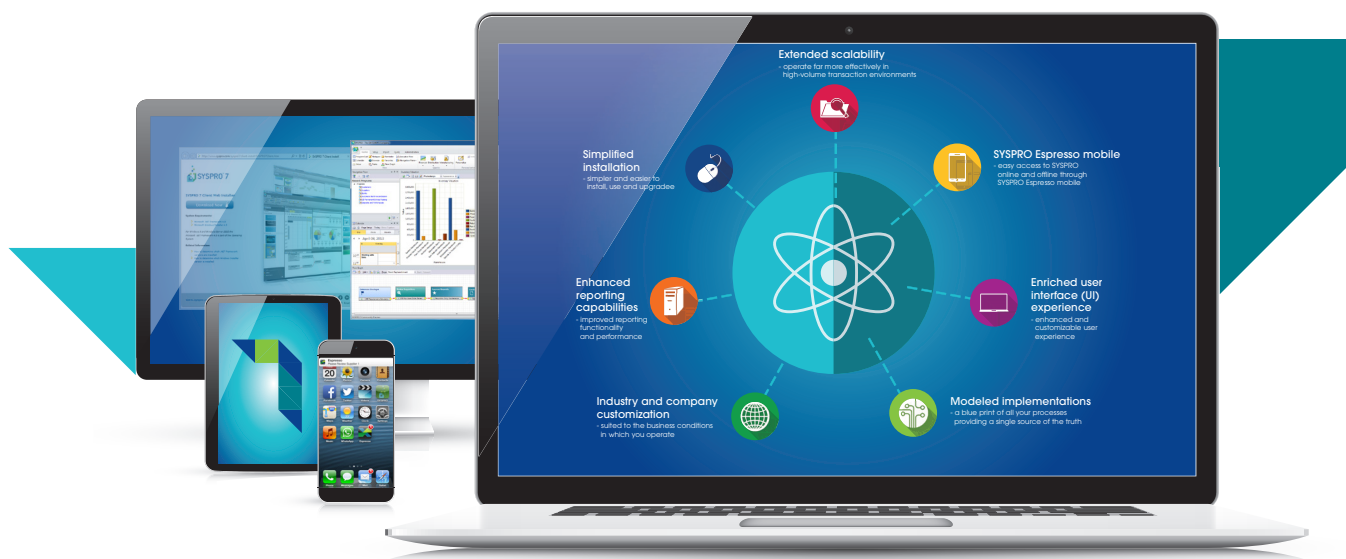


The SYSPRO Espresso mobile solution allows remote access to your SYSPRO functions and data from any mobile device, keeping you informed and productive at all times.

SYSPRO 7 introduces SYSPRO Quantum Architecture. This implementation framework enables complete modeling of an organization's end-to-end processes with direct links to SYSPRO functionality. Quantum Architecture allows customers to easily expand, automate and improve business efficiency, providing full visibility into the organization's operational layer across business units.

These enhancements create a SYSPRO solution that is easy to adopt and intuitive to use, enabling optimization of ERP investment.

Flexible, reliable, customizable, and scalable solutions





SYSPRO 7 Elements	Benefit to you	What you can do
Extended scalability	Greater capacity and faster performance	Process many more transactions, faster
Mobility	Access to SYSPRO on any device	Make business decisions and transact anywhere, at any time
Enriched UI	Your ERP looks and functions in a way that is meaningful to you and your business	Make your individual SYSPRO interface behave and look the way you want it to and mirror your business
Quantified implementations	A top-down and 360 degree view of your entire business and operations, mapped onto your business system	Through this visibility you are in control and can identify risks and potential bottlenecks and quickly act on market demands
Enterprise-wide customization	Adapt the system to fit your organization's unique business and industry processes, roles and language	Create a relevant work environment by applying industry terminology, process-driven menus and roles to your system
Streamlined processes	Simpler, faster business interactions and controls	Work more efficiently, save time and have greater control
Simplified installation	One-click installation for minimal disruption	Upgrade your system with one click-save time



Unrestricted growth with a system that expands with your business

Extended scalability

SYSPRO 7 has been architected to enable extended scalability by recognizing the requirement among manufacturing and distribution companies for faster performance, greater capacity and higher volumes. This significantly raises the level which the SYSPRO application can perform and provides powerful processing for more efficient and higher transactional throughput.

In SYSPRO 7, a number of the structural elements of the application have been increased substantially, including enhanced custom forms, larger field sizes and descriptions, and structured addresses.



Minimal disruption with simplified installation and an easy upgrade path



The software installation process has been simplified. The client machine installation can be done with a single click and has been re-engineered to make web installation easy. It automatically prepares the environment for the SYSPRO installation by installing as many prerequisites as possible without prompting for input. In addition, the software has a smaller footprint on the client. This provides a rich client in a cloud or WAN environment. The client software also includes automatic self-healing of all components as and when required.

For business on-the-go

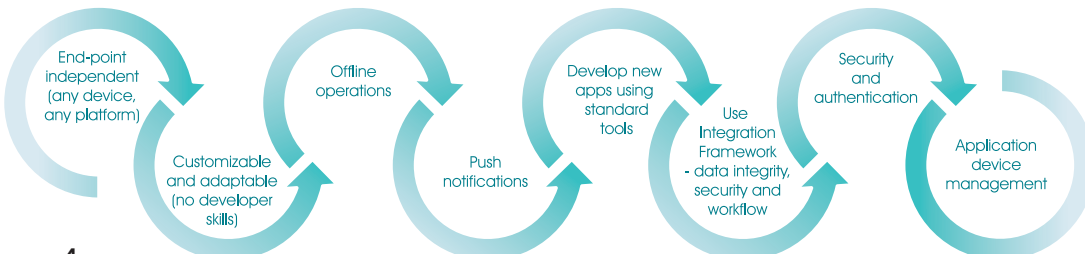
SYSPRO Espresso mobile provides easy access to SYSPRO anywhere, anytime, anyplace, anyhow

Be anywhere, anytime, and enable your employees to do the same. SYSPRO Espresso allows you to access exactly what you want from SYSPRO while on the go. It is delivered quickly and cheaply from the SYSPRO App Store.

As technology and business evolve, mobile devices play an increasingly important role in our daily lives. As the trend moves toward the on-the-go worker, more and more businesses rely on mobile devices to access data and perform business transactions remotely. The SYSPRO Espresso mobile solution provides customers with access to all their business information anywhere and anytime, even off-line, as easily as if they were at their desks.

SYSPRO Espresso is device agnostic and will work on any popular mobile device. This allows SYSPRO customers to implement the software without having to consider a preferred phone or tablet device. Applications built using the Espresso framework are easily downloaded from the SYSPRO App Store.

SYSPRO Espresso is licensed per user, not per device. Unlike other mobile deployments, the Espresso framework has built-in security and management tools to control specific devices and determine which users have access to which applications. As a mobile development environment, SYSPRO Espresso provides tools that enable easy creation of SYSPRO-centric mobile apps. In addition, applications are user friendly and can be customized without requiring advanced development skills.



A solution tailor-fitted to your business

Enriched User Interface (UI) puts you in control

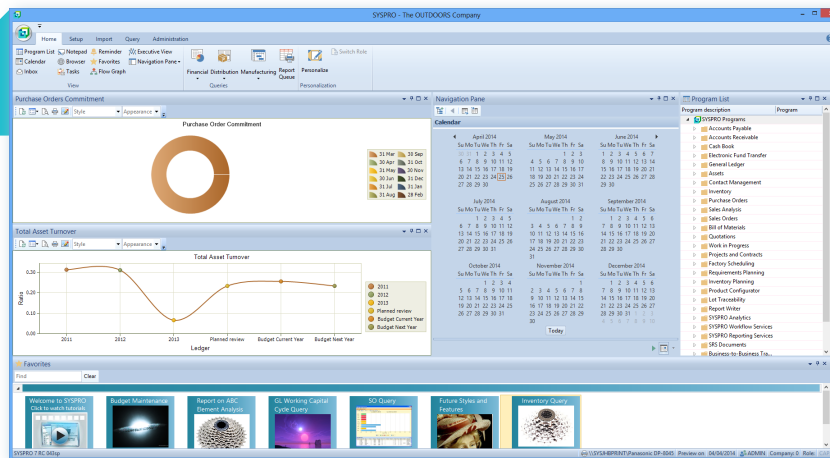
The increased level of customization capability throughout the product, including VBScripts, allows customers to design the interface they would like to use and have it function in a way meaningful to them and their business.

SYSPRO 7 provides for a simplified main screen with new themes, menus and UI controls, including improved touch capabilities. In keeping with the UI style of Windows 8, menus include active tiles for navigation and linking through to other menus or the flow graph process menus. A flow graph provides a means of navigating using a visual process. This provides the user with an interface that reflects the flow of their business processes. New chart controls provide enhanced graphic functionality.

A customization profiler has been added to the administration facility to enable a complete customization analysis of the current application.

SYSPRO list views can be tailored to display data from user-defined custom fields. Furthermore, the properties and behavior of buttons in any toolbar can be dynamically controlled using VBScript.

Address fields can be defined as structured to control how they are presented in display and entry forms throughout SYSPRO to support geographic and company-specific address standards. The address GeoLocation field enables users to quickly access map directions, using Google Maps or a similar application, based on the address latitude and longitude values.



Work the way you want to work

Enterprise-wide customizations provide layouts that can be tailored to enable the design of industry specific templates (e.g., Electronics, Machinery & Equipment, Food, and Automotive), and company-specific look and feel as well as relevant terminology and roles. New employees are able to learn the system quickly and easily by customizing the interfaces to suit the business. Roles capability enables the quick addition of a new operator role to have them up and running with all the functionality they need in minutes.

Streamlined implementations

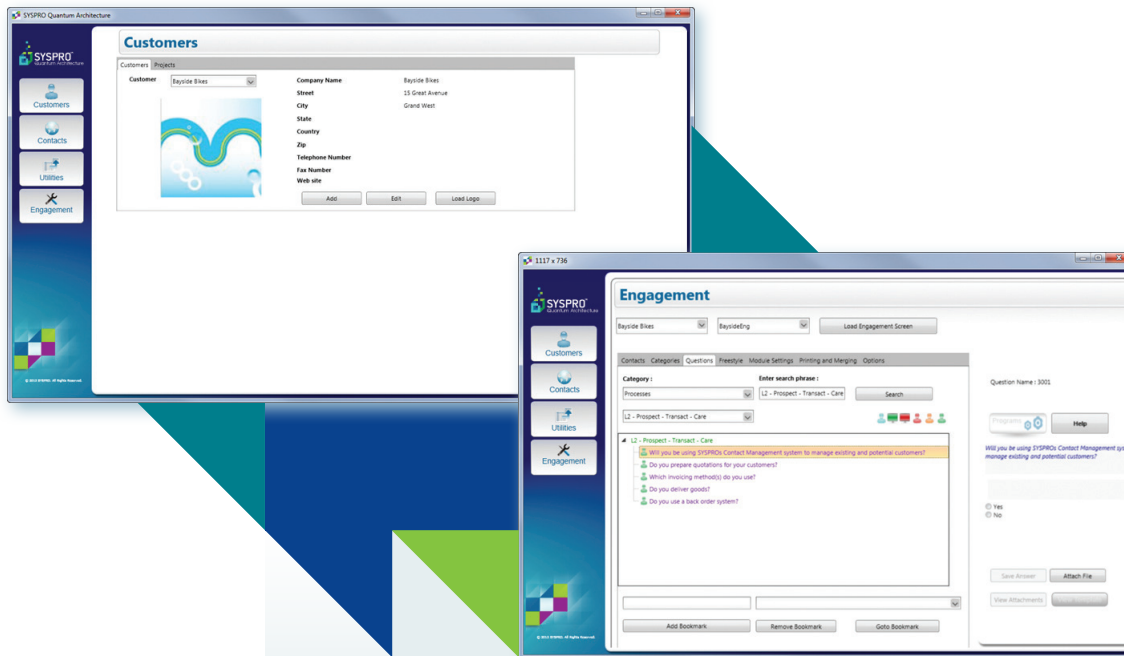
A blueprint of all your processes, providing a single source of the truth

Streamlined, modeled business processes that all stakeholders have visibility of, and to which they can contribute, are key to efficiency and effectiveness. Organizations find it difficult to synchronize business strategy with operational execution because they lack visibility into their processes and the information needed to support decision-making. Businesses need to apply new approaches and acquire tools that will provide a centralized, integrated, and optimized business solution.

SYSPRO Quantum Architecture is a model-based implementation framework and methodology that provides visibility into the business and system needs, the processes, and the decisions taken. It is a systematic and structured approach to implementing and optimizing your ERP system.

By providing an operational blueprint, this process engagement and deployment framework ensures the implemented system corresponds with the goals and business processes in the organization.

With SYSPRO Quantum Architecture, customers can model exactly how their business works and import that configuration into the software, ensuring all the processes and any other options are configured exactly how they would like to run their business. Because the modeling can be done at any stage of the SYSPRO lifecycle, SYSPRO Quantum Architecture is not just for new sites. It can also be used for existing sites to re-engineer and streamline their processes, allowing customers to review and update processes as their business grows and realize the full potential of SYSPRO.



The SYSPRO modeling framework incorporates the following:

- Business goals aligned to ERP strategy
- Business process modeling, mapped onto SYSPRO software
- Business questions resulting in SYSPRO configuration
- Project management
- Recorded conversations and decisions
- Identified and modeled integration points
- Identified, relevant KPIs
- Defined, required security
- Master data forms and imports
- Report of model and decisions

Accelerate your implementation and see an earlier return on your investment

SYSPRO 7 sees the introduction of SYSPRO Sprint, an accelerated implementation methodology which provides a pre-configured version of SYSPRO. Using SYSPRO Sprint to implement your SYSPRO software will enable your business to be swiftly up and running to realize an early return on your ERP investment.

SYSPRO Sprint provides standardized set-up options, including industry data which can be quickly and easily imported and personalized, as well as pre-defined integrations and ledger codes for manufacturing, accounting, sales, and purchasing.



Improved efficiencies with simpler, faster business interactions

Customizable reports supplied anywhere, any place

In SYSPRO 7, SYSPRO Reporting Services (SRS) leverages the benefits of server-side reporting. By choosing to harness the power of the server's processor, rather than the typically less powerful processors of client machines, SYSPRO administrators can ensure that SYSPRO reports are output considerably faster. Clients are free to continue with other SYSPRO transactions while queued SRS reports are spooled, printed, emailed and stored in the server-side SRS repository. A PDF viewer is the only client tool needed to view an SRS report. No SRS runtime application required on client machines. The stored SRS reports can be remotely accessed by other applications such as the SYSPRO Espresso app.

SYSPRO already provides access to SYSPRO data using Microsoft Word® or Excel®, without the need to have SYSPRO installed on the desktop. This capability is extended in SYSPRO 7, allowing any report to be accessed from within Microsoft Outlook® on a remote desktop or mobile device.



Greater financial control

Various enhancements in SYSPRO 7 make SYSPRO financials easier to access, use and manage. A single screen showing multiple areas of a financial transaction enable full visibility and easy navigation between functions to complete a transaction. Examples are AP Contra Invoices and AR Cash postings. This not only saves time but also enables greater accuracy in processing the transactions.

GL control balancing reports now provide a comparative summary of different sets of data in a single view so that imbalances are highlighted and can be easily corrected. This means financial executives can be confident in knowing that what has been captured at the operational level has been accurately transferred to the general ledger for financial reporting.

The newly introduced inter-company asset transfer feature enables removing and adding assets between companies in a single action. This provides for greater accuracy and control over the transference of valuations and depreciations.



Effective governance and security

SYSPRO 7 introduces a number of enhancements to current SYSPRO features which enable more effective governance and better security.

The Quotation system now permits all versions of a quote to be recorded. This ensures accurate and secure record-keeping, of all changes with the added benefit of being able to quickly reference and re-use historical information.

Enhanced SYSPRO Reporting Services facilitates the automatic storing of all documents and reports. This provides for comprehensive record-keeping of all documents, which are quick and easy to reference as required.

Various functions within a single program, such as GL Journal posting, have been separated into smaller programs to provide more secure management and control over access and usage.

The enhanced enterprise-wide Role-based security enables secure record keeping including enhanced support of Sarbanes Oxley requirements.



A more efficient supply chain

Functional improvements to various operational programs in SYSPRO 7, including new BOM trial kitting, simplified Work In Progress labor posting and re-engineered lot, bin and serial allocations into a grid interface in easy-to-use screens, enable a better user experience for your employees when engaging with the system. This leads to more efficient processing at the operational level and ultimately improves the productivity throughout your supply chain.

A more productive sales order team and better customer service

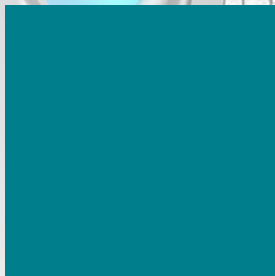
Various improvements to the functionality within SYSPRO 7 will ensure your sales force will be able to provide even quicker response times to changing customer demand. Through a single easy-to-use interface, the new Sales Order entry express program facilitates a simplified, more effective sales entry process and enables a more responsive customer service.

The new web-based Product Configurator will enable your customers to use the configuration wizard using only a browser. The selection criteria are driven by business objects so that data entered in SYSPRO are controlled and accurate. Your team can also use the same tool internally.



SYSPRO 7 embraces the following technologies:

- Microsoft .NET® framework and ASP.NET
- Microsoft SQL Server®
- Microsoft Windows® 8 API support for calling SYSPRO's integration framework
- Windows Communication Foundation (WCF)
- Microsoft Windows Server
- Microsoft Office
- 64-bit Windows operating system
- Crystal Reports Server
- On-premise or cloud



What you can expect from your SYSPRO ERP investment




- A business process-driven solution with over 35 years of experience
- A system that grows with you. Easy to install, easy to learn, and easy to upgrade - from simple integration with existing line-of-business applications, through to automation and optimization of all your business processes
- A familiar, intuitive user experience built on industry-standard technology
- Accessible anywhere, at any time, and on any device:
 - Cloud
 - MS Office
 - Desktop client
 - Mobile devices
- Flexible, customizable solutions designed to fit your business and put you in control
- World-class support for your implementation and operational requirements



SYSPRO 7 is now TEC Certified for online evaluation of enterprise resource planning (ERP) for discrete, process, and mixed-mode manufacturing. Technology Evaluation Centers (TEC) help private and public sector organizations choose the best enterprise software solutions for their unique business needs—quickly, impartially, and cost effectively. TEC Certification is an impartial review that verifies a software product's ability to address real-world business processes.

About SYSPRO

SYSPRO is an internationally-recognized, leading provider of enterprise business solutions. Formed in 1978, SYSPRO was one of the first software vendors to develop an Enterprise Resource Planning (ERP) solution. Today, SYSPRO is a global company, represented on six continents and by more than 1600 channel and support partners. Thousands of licensed companies across a broad spectrum of industries in over 60 countries trust SYSPRO as the platform on which to manage their business processes.



Customer focus is a core component of SYSPRO's corporate culture and one of the key reasons for SYSPRO's strong leadership position in the enterprise application market. By focusing on people and building lasting relationships with customers and partners, SYSPRO consistently excels at guiding customers through all aspects of their adoption and ongoing usage. The aim is to deliver world-class solutions that give customers the control, insight and agility they need for a competitive advantage in a global economy. As such, SYSPRO provides a unique combination of robust, scalable technologies that ensure minimal risk and a high return on investment.

SYSPRO continually develops remarkable software that simplifies operational effectiveness and keeps customers in control of their businesses. Our vision is focused on meeting customer needs today and in the future.

SYSPRO provides a unique combination of robust, scalable solutions that ensure minimal risk and a high return on investment.

**Africa and the Middle East**

SYSPRO (Pty) Limited
Block A
Sunninghill Place
9 Simba Road
Sunninghill
Johannesburg
2191
South Africa
Tel: +27 (0) 11 461 1000
Email: info@za.syspro.com

Canada

SYSPRO Software Limited
4400 Dominion Street
Suite 215
Burnaby (Vancouver)
British Columbia
Canada
V5G 4G3
Tel: +1 (604) 451 8889
Email: info@ca.syspro.com

USA & Americas

SYSPRO Impact Software, Inc.
959 South Coast Drive, Suite 100
Costa Mesa, California
92626
USA
Tel: +1 (714) 437 1000
Toll free: 800 369 8649
Email: info@us.syspro.com

Asia Pacific

SYSPRO Software Pty Ltd
Suite 1102, Level 11
201 Miller Street
North Sydney NSW 2060
Australia
Tel: +61 (2) 9870 5555
Email: info@au.syspro.com

SYSPRO Software Pte Ltd
8 Eu Tong Sen Street
#19-91
The Central
Singapore
059818
Tel: (65) 6256 1921
Email: info@sg.syspro.com

All enquiries:
Australia: 1300 882 311 (Local call)

UK & Europe

K3 Syspro
Baltimore House
50 Kansas Avenue
Salford Quays
Manchester
United Kingdom
M50 2GL
Tel: +44 161 876 4498
Email: info@k3syspro.com

www.syspro.com

V03 Copyright © 2014 SYSPRO. All rights reserved.

All brand and product names are trademarks or registered trademarks of their respective holders. No part of this material may be reproduced or transmitted in any form or by any means, electronic or mechanical, including photocopying, recording, or by any information storage or retrieval system, without prior written permission from the publisher.